

Talmecc Chuck Jaws

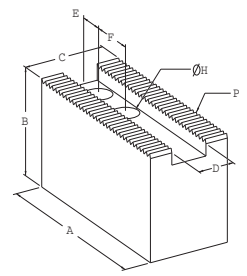
SOFT TOP JAWS

Model No.	Chuck Dia.	Serration	A (mm)	B (mm)	C (mm)	D (mm)	E (mm)	F (mm)	H (mm)	Weight kg.	Individual Code No.	SALE \$	Set of 3 Code No.	SALE \$
HKM.11.01/S	110	1.5x60°	50	25	20	8	8	15	7	0.15	491-215	19.44		
HKM.11.05/S	110	1.5x60°	55	25	25	10	13	14	9	0.196	491-220	20.02		
HKM.11.06/S	110	1.5x60°	55	50	25	10	13	14	9	0.412	491-225	29.65		
HKM.13.01/S	135	1.5x60°	55	30	25	10	10	18	9	0.239	491-235	20.02		
HKM.13.02/S	135	1.5x60°	55	40	25	10	10	18	9	0.316	491-240	28.77		
HKM.13.05/S	135	1.5x60°	55	25	25	10	14	19	9	0.192	491-250	20.41		
HKM.16.05/S	165(6")	1.5x60°	80	30	30	12	19	20	11	0.40	491-265	21.19	491-266	63.57
HKM.16.08/S	165(6")	1.5x60°	75	60	30	12	19	20	11	0.76	491-280	34.31	491-281	102.93
HKM.21.3.01/S	210(8")	3x60°	95	40	40	14	24	25	13	0.96	491-395	29.65		
HKM.21.00/S	210(8")	1.5x60°	95	40	35	14	24	25	13	0.80	491-295	25.86		
HKM.21.01/AL	210(8")	1.5x60°	95	40	40	14	20	25	13	0.97	491-305	38.01		
HKM.21.01/S	210(8")	1.5x60°	95	40	40	14	20	25	13	0.97	491-315	25.86	491-316	77.57
HKM.21.02/S	210(8")	1.5x60°	95	50	40	14	20	25	13	1.20	491-325	31.98		
HKM.21.03/S	210(8")	1.5x60°	95	60	40	14	20	25	13	1.44	491-335	35.96		
HKM.21.04/S	210(8")	1.5x60°	95	80	40	14	20	25	13	1.82	491-345	52.39		
HKM.21.05/S	210(8")	1.5x60°	95	100	40	14	20	25	13	2.43	491-355	61.14		
HKM.21.10/S	210-254(8")	1.5x60°	95	40	40	16	20	25	13	0.96	491-375	26.73		
HKM.21.11/S	210-254(8")	1.5x60°	95	50	40	16	20	25	13	1.19	491-380	34.31		
HKM.21.12/S	210-254(8")	1.5x60°	95	60	40	16	20	25	13	1.40	491-385	38.59		
HKM.25.01/AL	254-270(10")	1.5x60°	110	40	40	16	30	30	13	1.11	491-405	40.63		
HKM.25.01/S	254-270(10")	1.5x60°	110	40	40	16	30	30	13	1.11	491-420	26.92	491-421	80.77
HKM.25.01/SB (blank)	254-270(10")	1.5x60°	110	40	40	16	30	30	13	1.11	491-425	26.92		
HKM.25.01/SL120	254-270(10")	1.5x60°	120	40	40	16	30	30	13	1.36	491-430	33.73		
HKM.25.01/SL130	254-270(10")	1.5x60°	130	40	40	16	30	30	13	1.61	491-435	33.73		
HKM.25.02/S	254-270(10")	1.5x60°	110	60	40	16	30	30	13	1.70	491-495	37.71		
HKM.25.02/SB (blank)	254-270(10")	1.5x60°	110	60	40	16	30	30	13	1.70	491-450	37.71		
HKM.25.03/S	254-270(10")	1.5x60°	110	80	40	16	30	30	13	2.28	491-465	54.14		
HKM.25.03/SB (blank)	254-270(10")	1.5x60°	110	80	40	16	30	30	13	2.28	491-470	54.14		
HKM.25.04/S	254-270(10")	1.5x60°	110	100	40	16	30	30	13	2.90	491-480	64.83	491-481	194.50
HKM.30.01/S	304-381(12")	1.5x60°	130	50	50	18	25	30	15	2.05	491-445	40.63	491-496	121.89
HKM.30.03/S	304-381(12")	1.5x60°	130	80	50	18	25	30	15	3.44	491-515	61.72		
HKM.30.04/S	304-381(12")	1.5x60°	130	100	50	18	25	30	15	4.30	491-530	68.53	491-531	205.58
HKM.30.10/S	304(12")	1.5x60°	130	50	50	21	22	30	17	2.04	491-545	40.63	491-546	121.89
HKM.30.12/S	304(12")	1.5x60°	130	80	50	21	22	30	17	3.33	491-550	61.14	491-551	183.42
HKM.30.13/S	304(12")	1.5x60°	130	100	50	21	22	30	17	4.20	491-560	80.77	491-561	242.32
HKM.30.15/S	304(12")	1.5x60°	130	50	50	21	22	35	17	2.04	491-570	40.63		
HKM.38.00/S	381(15")	1.5x60°	155	60	60	22	37	43	21	3.65	491-585	80.77	491-586	242.32
HKM.38.01/S	381-454(15")	1.5x60°	165	70	70	22	37	43	21	5.40	491-605	99.34		
HKM.38.02/S	381(15")	1.5x60°	155	100	60	22	37	43	21	6.00	491-610	113.63	491-611	340.88
HKM.38.04/S	381(15")	1.5x60°	155	60	60	22	30	60	21	3.65	491-615	100.31		
HKM.38.05/S	381(15")	1.5x60°	156	70	70	22	30	60	21	5.10	491-630	99.34		
HKM.38.3.00/S	381-454(15")	3x60°	155	60	60	22	30	50	21	3.65	491-670	80.77	491-671	242.32
HKM.38.3.01/S	381-454(15")	3x60°	156	70	70	22	30	50	21	5.10	491-685	99.34		
HKM.38.3.05/S	381(15")	3x60°	140	60	60	26	30	42	21	3.20	491-695	99.34		
HKM.38.10/S	381(15")	1.5x60°	135	60	50	25.5	26	43	21	2.49	491-650	56.08	491-651	168.25
HKM.38.12/S	381(15")	1.5x60°	135	100	50	25.5	26	43	21	4.14	491-660	95.35	491-661	286.06
HKM.53.3.01/S	454-610(18")	3x60°	200	70	70	25	40	60	21	6.60	491-705	121.79		
HKM.61.3.01/S	381-610(18")	3x60°	156	70	70	26	34	50	21	5.05	491-710	109.16		

SAVE 10%

SOFT TOP JAWS FOR AUTOBLOK, HOWA, KITAGAWA, MATSUMOTO, SHUNK.

Special Features
• Rectangular



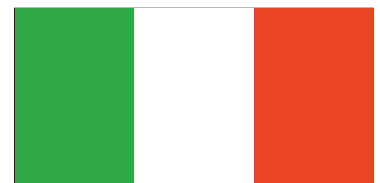
EUROPEAN MADE

Distributed By:

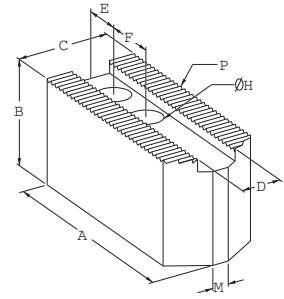


650 King Street, Port Colborne, ON L3K 4H8
 Phone: 905-834-9161 / 800-387-6236
 Fax: 905-834-5244
 www.smithindustrialsupply.com

MADE IN ITALY



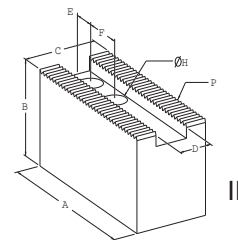
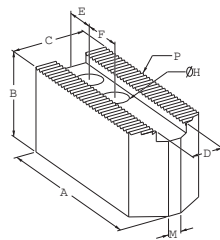
POINTED SOFT TOP JAWS FOR AUTOBLOK, HOWA, KITAGAWA, MATSUMOTO, SHUNK.



EUROPEAN MADE

SOFT TOP JAWS POINTED															
Model No.	Chuck Dia.	Serration	A (mm)	B (mm)	C (mm)	D (mm)	E (mm)	F (mm)	H (mm)	M (mm)	Weight kg.	Individual Code No.	SALE \$	Set of 3 Code No.	SALE \$
HKM.13.01	135	1.5x60°	55	30	25	10	10	18	9	5	0.239	491-230	20.02		
HKM.13.05	135	1.5x60°	55	25	25	10	14	19	9	4	0.192	491-245	20.41		
HKM.16.05	165(6")	1.5x60°	80	30	30	12	19	20	11	7	0.40	491-255	21.19	491-256	63.57
HKM.16.08	165(6")	1.5x60°	75	60	30	12	19	20	11	7	0.76	491-275	34.31		
HKM.21.00	210(8")	1.5x60°	95	40	35	14	24	25	13	5	0.80	491-290	25.86		
HKM.21.3.01	210(8")	3x60°	95	40	40	14	24	25	13	12	0.96	491-390	29.65		
HKM.21.01	210(8")	1.5x60°	95	40	40	14	20	25	13	12	0.97	491-300	25.86	491-301	77.57
HKM.21.02	210(8")	1.5x60°	95	50	40	14	20	25	13	12	1.20	491-320	31.98		
HKM.21.03	210(8")	1.5x60°	95	60	40	14	20	25	13	12	1.44	491-330	35.96		
HKM.21.04	210(8")	1.5x60°	95	80	40	14	20	25	13	12	1.82	491-340	52.39		
HKM.21.05	210(8")	1.5x60°	95	100	40	14	20	25	13	12	2.43	491-350	61.14		
HKM.21.10	210-254(8")	1.5x60°	95	40	40	16	20	25	13	12	0.96	491-365	26.73		
HKM.25.01	254-270(10")	1.5x60°	110	40	40	16	30	30	13	12	1.11	491-400	26.92	491-401	80.77
HKM.25.01 L130254-270(10")		1.5x60°	130	40	40	16	30	30	13	8	1.36	491-415	33.73		
HKM.25.02	254-270(10")	1.5x60°	110	60	40	16	30	30	13	12	1.70	491-440	37.71		
HKM.25.03	254-270(10")	1.5x60°	110	80	40	16	30	30	13	12	2.28	491-455	54.14		
HKM.25.04	254-270(10")	1.5x60°	110	100	40	16	30	30	13	12	2.90	491-475	64.83	491-476	194.50
HKM.25.10	254(10")	1.5x60°	110	45	45	18	25	30	15	15	1.57	491-485	30.13		
HKM.30.01	304-381(12")	1.5x60°	130	50	50	18	25	30	15	20	2.05	491-490	40.63	491-491	121.89
HKM.30.02	304-381(12")	1.5x60°	130	60	50	18	25	30	15	22	2.55	491-500	44.32		
HKM.30.03	304-381(12")	1.5x60°	130	80	50	18	25	30	15	22	3.44	491-505	61.72		
HKM.30.04	304-381(12")	1.5x60°	130	100	50	18	25	30	15	22	4.30	491-520	68.53	491-521	205.58
HKM.30.10	304(12")	1.5x60°	130	50	50	21	22	30	17	20	2.04	491-535	40.63	491-536	121.89
HKM.30.13	304(12")	1.5x60°	130	100	50	21	22	30	17	20	4.20	491-555	80.77	491-556	242.32
HKM.30.15	304(12")	1.5x60°	130	50	50	21	22	35	17	20	2.04	491-565	40.63		
HKM.38.00	381(15")	1.5x60°	155	60	60	22	37	43	21	-	3.65	491-580	80.77	491-581	242.32
HKM.38.01	381-454(15")	1.5x60°	165	70	70	22	37	43	21	-	5.40	491-590	99.34		
HKM.38.05	381(15")	1.5x60°	156	70	70	22	30	60	21	-	5.10	491-620	99.34		
HKM.38.3.00	381-454(15")	3x60°	155	60	60	22	30	50	21	-	3.65	491-665	80.77	491-666	242.32
HKM.38.3.01	381-454(15")	3x60°	156	70	70	22	30	50	21	-	5.10	491-675	99.34		
HKM.38.10	381(15")	1.5x60°	135	60	50	25.5	26	43	21	-	2.49	491-640	56.08	491-641	168.25
HKM.38.11	381-454(15")	1.5x60°	165	70	70	25.5	37	43	21	-	5.40	491-655	99.34	491-656	298.02
HKM.53.3.01	454-610	3x60°	200	70	70	25	40	60	21	-	6.60	491-700	121.79		

SOFT TOP JAWS FOR SMW AUTOBLOK



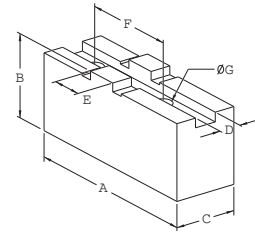
SOFT TOP JAWS															
Model No.	Chuck Dia.	Serration	Drawing No.	A (mm)	B (mm)	C (mm)	D (mm)	E (mm)	F (mm)	G (mm)	H (mm)	M (mm)	Weight kg.	Individual Code No.	SALE \$
102205/A	200-220	1/16x90°	I	95	40	40	17	20	23	-	13	12	0.96	491-005	22.74
102207/A	250	1/16x90°	I	115	50	50	21	20	30	-	17	20	1.76	491-020	31.30
102208/A	300-350	1/16x90°	I	130	50	50	21	22	30	-	17	20	2.10	491-040	37.03
102210/A	500	3/32x90°	II	170	60	60	28	27	38	38	21	-	3.62	491-050	94.38

SOFT TOP JAWS FOR SMW, BERG, GAMET, SHUNK, ROHM, FORKARDT

SOFT TOP JAWS														
Model No.	Chuck Dia.	Serration	Drawing No.	A (mm)	B (mm)	C (mm)	D (mm)	E (mm)	F (mm)	H (mm)	M (mm)	Weight kg.	Individual Code No.	SALE \$
242202/F	250	1/16x90°	II	120	80	50	21	30	28	17	-	3.08	491-132	49.28
242204/F	400-501	3/32x90°	II	155	90	60	25.5	30	35	21	-	6.40	491-135	91.08

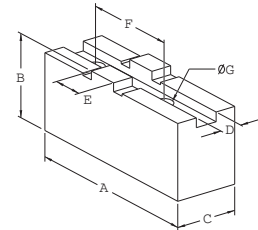


SOFT TOP JAWS FOR SMW/AUTOBLOK, BERG, FORKARDT, ROHM, SCHUNK



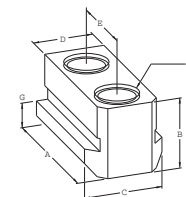
SOFT TOP JAWS AMERICAN TONGUE AND GROOVE											
Model No.	Chuck Dia.	A (mm)	B (mm)	C (mm)	D (mm)	E (mm)	F (mm)	G (mm)	Weight kg.	Individual Code No.	SALE \$
232200/F	160	85	40	20	8	18	32	9	0.38	491-095	24.11
232201/F	200	105	50	25	10	20	40	9	0.62	491-102	26.63
232202/F	250	125	50	30	12	20	40	13	1.12	491-105	34.02
232203/F	315	145	60	35	12	26	54	13	1.93	491-115	46.95
232204/F	400	180	80	50	18	30	60	17	4.56	491-125	84.66

SOFT TOP JAWS AMERICAN TONGUE AND GROOVE FOR ROHM MODELS ZG,ZS,ZGU,ZSU



SOFT TOP JAWS AMERICAN TONGUE AND GROOVE												
Model No.	Chuck Dia.	A (mm)	B (mm)	C (mm)	D (mm)	E (mm)	F (mm)	G (mm)	Weight kg.	Individual Code No.	SALE \$	Set of 3 Code No. SALE \$
262200/R	100	53	30	25	7.96	9.49	24	7	0.24	491-151	25.08	
262201/R	125	62	40	25	7.96	12.67	32	9	0.36	491-155	24.98	
262202/R	160	74	45	30	7.96	12.67	38.1	9	0.61	491-160	28.97	
262203/R	200	87	45	30	7.96	12.67	44.45	9	0.76	491-165	30.81	
262204/R	250	103	50	35	12.72	19.02	53.95	13	1.1	491-170	33.63	491-171 100.89
262205/R	315	120	60	40	12.72	19.02	63.50	13	1.87	491-180	41.99	
262205/R	315	140	60	40	12.72	19.02	63.50	13	2.2	491-181	45.30	
262206/R	350-400	140	70	50	12.72	19.02	76.20	17	3.0	491-190	81.16	
262207/R	450-800	160	80	50	12.72	19.02	76.20	21	3.5	491-195	111.97	

T-NUTS FOR KITAGAWA CHUCKS



T-NUTS FOR KITAGAWA CHUCKS											
Model No.	Chuck Dia.	A (mm)	B (mm)	C (mm)	D (mm)	E (mm)	F (mm)	G (mm)	Weight kg.	Individual Code No.	SALE \$
2903/GT15-14	100-130	26	15	15	10	14	M8	5.5	0.021	494-055	31.20
2904/GT18.5	160	40	18.5	18	12	20	M10	7.5	0.071	494-060	31.20
2905/GT20.5	200-210	45	20	20	14	25	M12	8	0.080	494-070	35.67
2906/GT21.5	250	53	21.5	22	16	30	M12	8.5	0.124	494-085	60.17

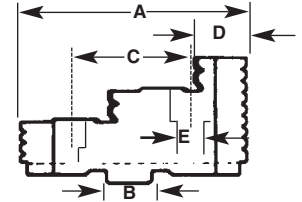
EUROPEAN MADE



EUROPEAN MADE

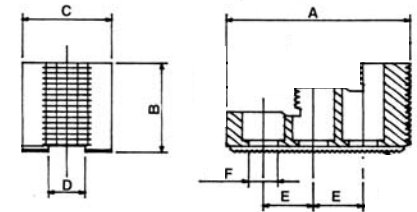
HARD TOP JAWS AMERICAN TONGUE AND GROOVE

For most manual lathe chucks



HARD TOP JAWS AMERICAN TONGUE AND GROOVE							
Chuck Dia.	A (mm)	B (mm)	C (mm)	D (mm)	E (mm)	Set of 3 Code No.	SALE \$
125	56	12.68	32	13	9	399-870	251.75
160	66.7	12.68	38.1	15.8	9	397-020	317.84
200	79.5	12.68	44.45	19	9	397-025	356.72
250	95.3	19.03	53.95	22.2	14	397-030	456.84
315	109.5	19.03	63.5	25.4	14	397-035	635.69

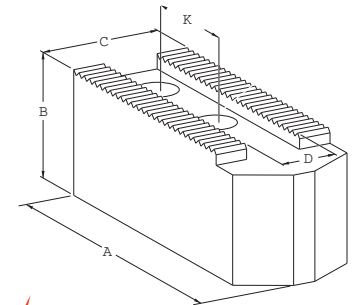
HARD TOP JAWS SERRATED 60° KITAGAWA, HOWA, MATSUMOTO, SUGA, NIKKO AND OTHER BRANDS



HARD TOP JAWS									
Chuck Dia.	Serration	A (mm)	B (mm)	C (mm)	D (mm)	E (mm)	F (mm)	Set of 3 Code No.	SALE \$
6"	1.5x60°	66	36	34.7	12	20	11	395-505	623.05
8"	1.5x60°	81	49	36	14	25	13	395-510	629.86
10"	1.5x60°	99.5	54	44.5	16	30	13	395-515	834.95
12"	1.5x60°	97.5	50	55	18	30	15	395-517	531.10
12"	1.5x60°	103	55.5	50	21	30	17	395-520	892.30
15"	1.5x60°	149	62	80	22	43	21	395-521	531.10
15"	1.5x60°	149	62	86	25.5	43	21	395-522	410.86

KITAGAWA POWER CHUCK JAWS

Models B, BT, B200, BT200, HOH, HOB, N, NL
 • 1.5mm x 60° Serrated



QUALITY IMPORT

KITAGAWA POWER CHUCK JAWS								
Chuck Size	A	B	C	D	F	Screw Size	Set of 3 Code No.	SALE \$
6"	70	38	25	12	20	M10	656-050	39.49
8"	90	50	38	14	25	M12	656-055	47.95
10"	120	50	38	16	30	M12	656-060	59.87
12"	120	50	38	18	30	M14	656-065	97.11
15"	165	62	62	22	43	M20	656-070	215.57



Pricing valid while quantities last or until further notice